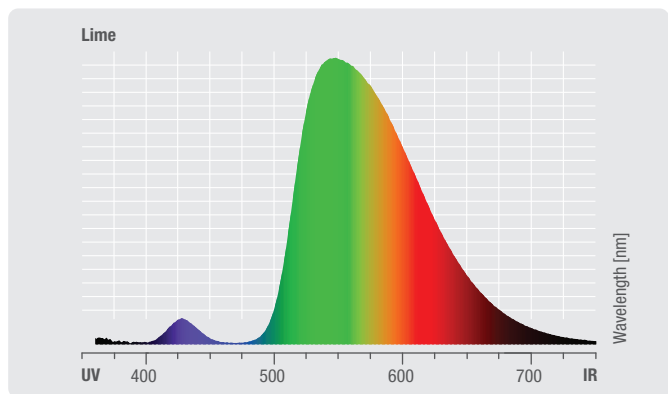
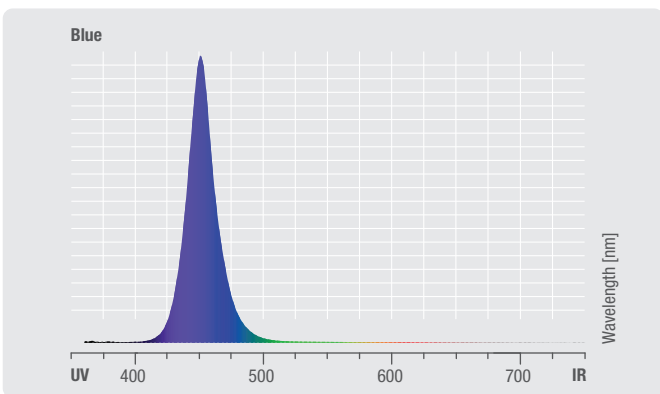
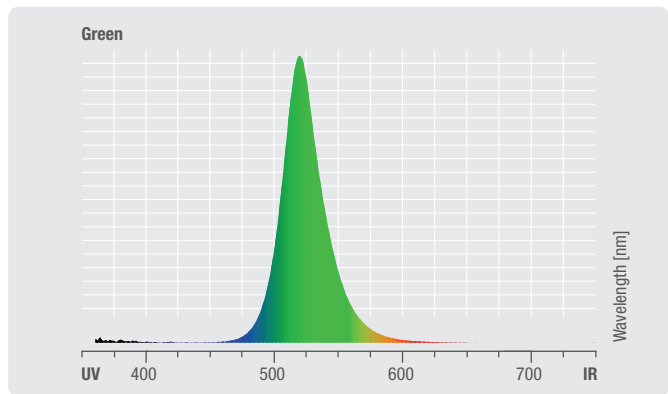
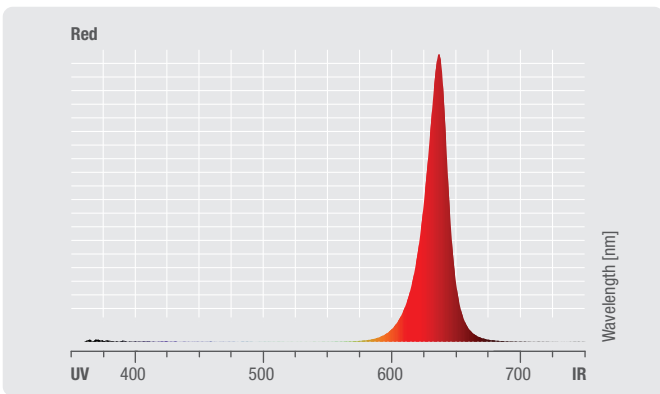
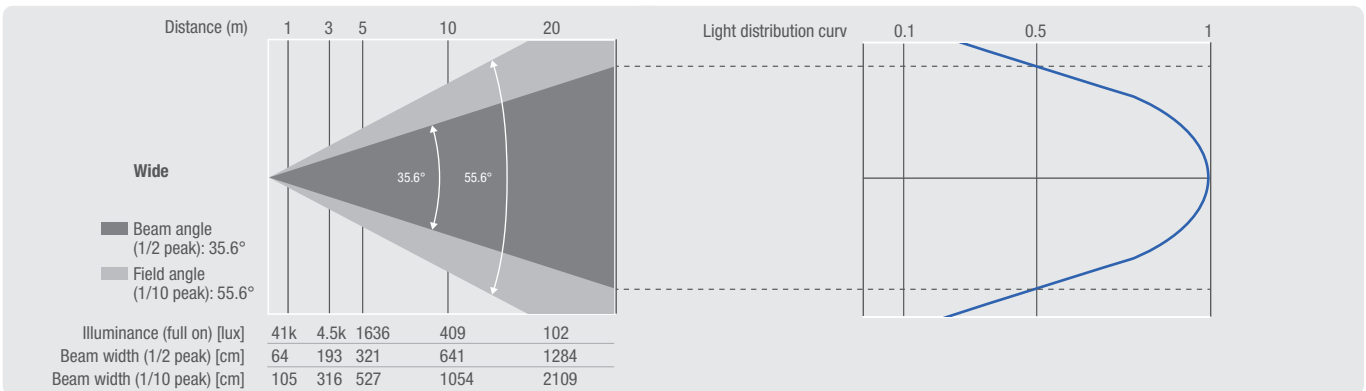
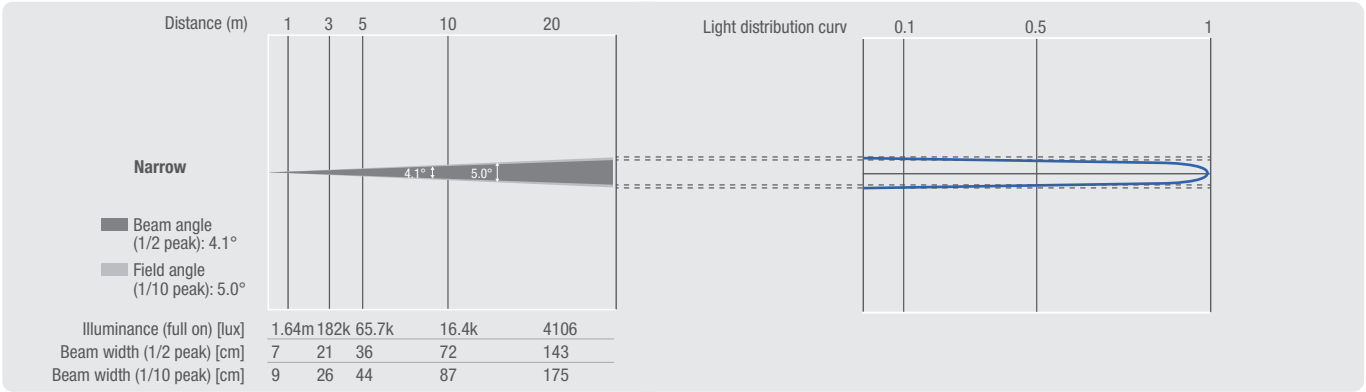


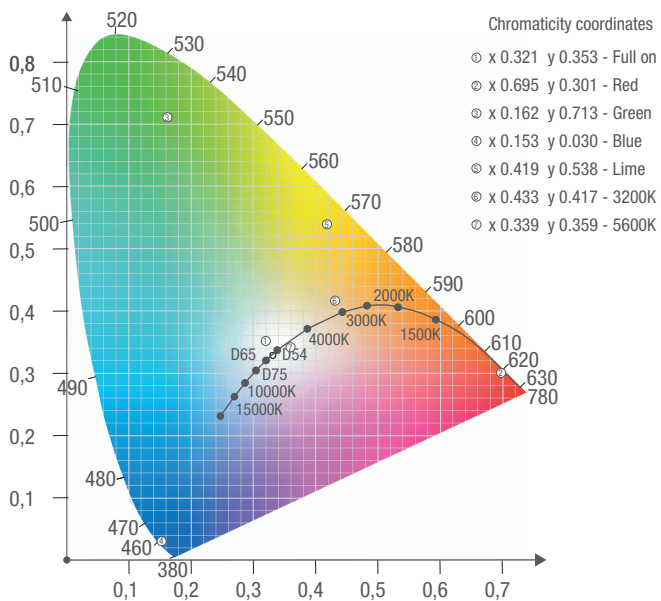
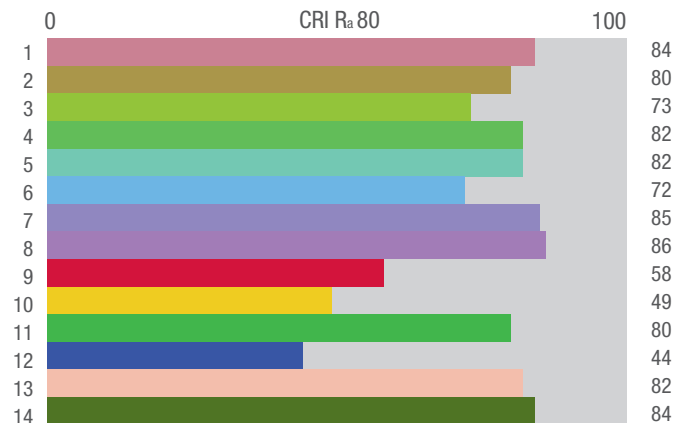
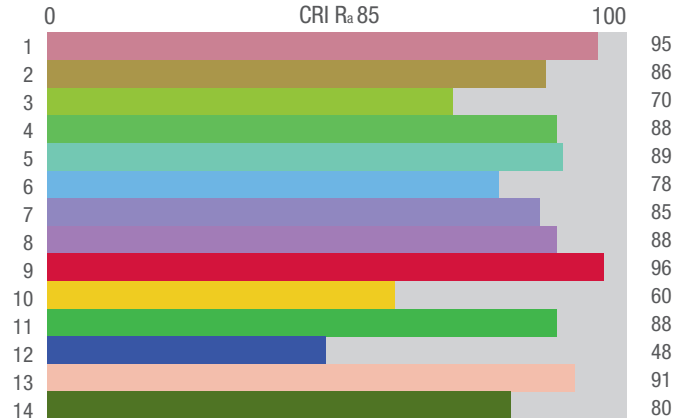
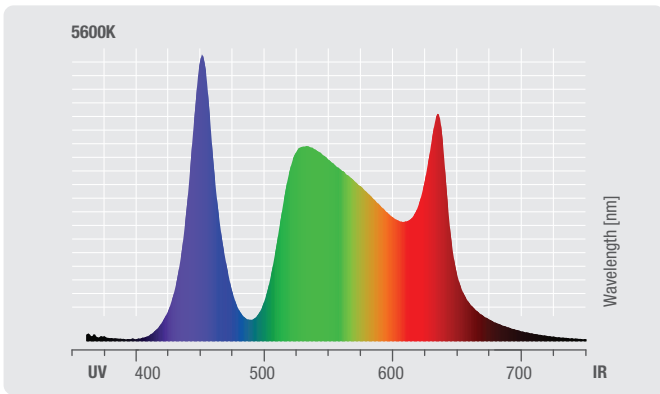
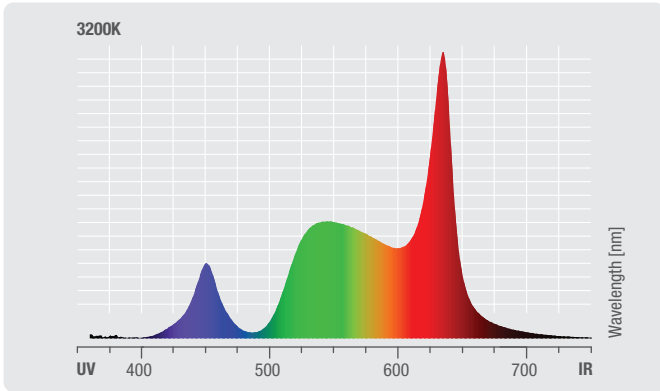
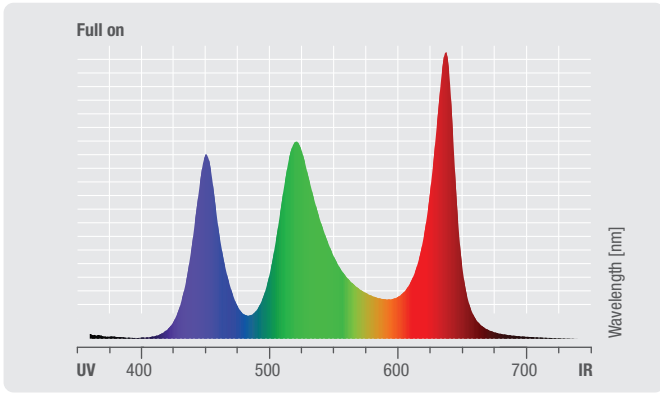
Photometric Measurements

Photometrische Messungen | Mesures Photométriques
Mediciones Fotométricas

OTOS® W12 (CLOTOSW12)

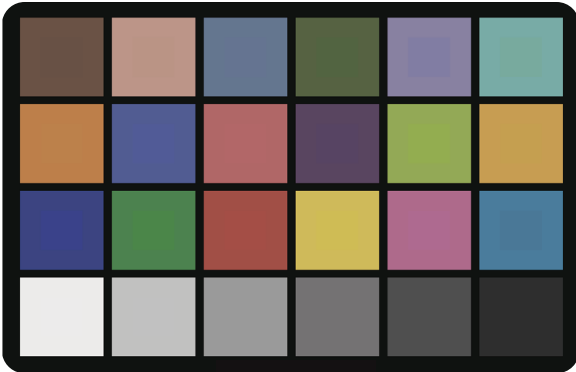
	Luminous flux	Chromaticity coordinates	CCT	R _a
Full on	11133 lm	x 0.321 y 0.353	1.8K - 8.2K	85
Red (calibrated)	2090 lm	x 0.695 y 0.301	-	-
Green (calibrated)	5498 lm	x 0.162 y 0.713	-	-
Blue (calibrated)	975 lm	x 0.153 y 0.030	-	-
Lime (calibrated)	7865 lm	x 0.419 y 0.538	-	-
3200K (calibrated)	9151 lm	x 0.433 y 0.417	-	85
5600K (calibrated)	9975 lm	x 0.339 y 0.359	-	80



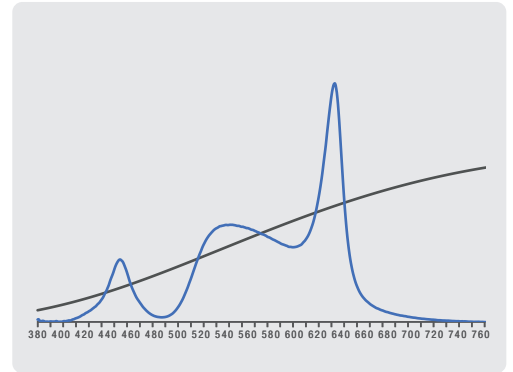


**3200K
Television Lighting
Consistency Index-2012**

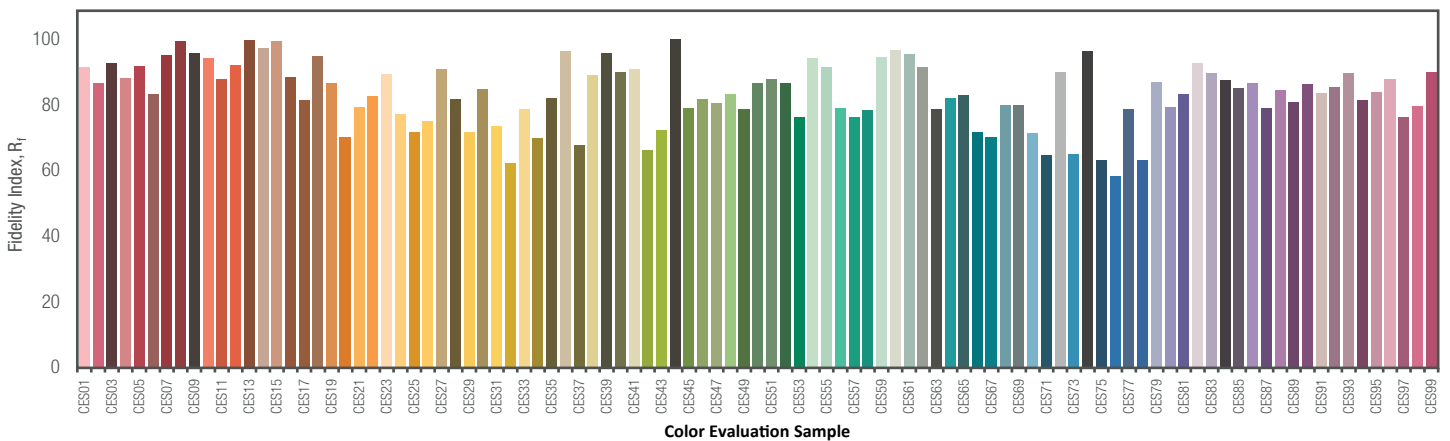
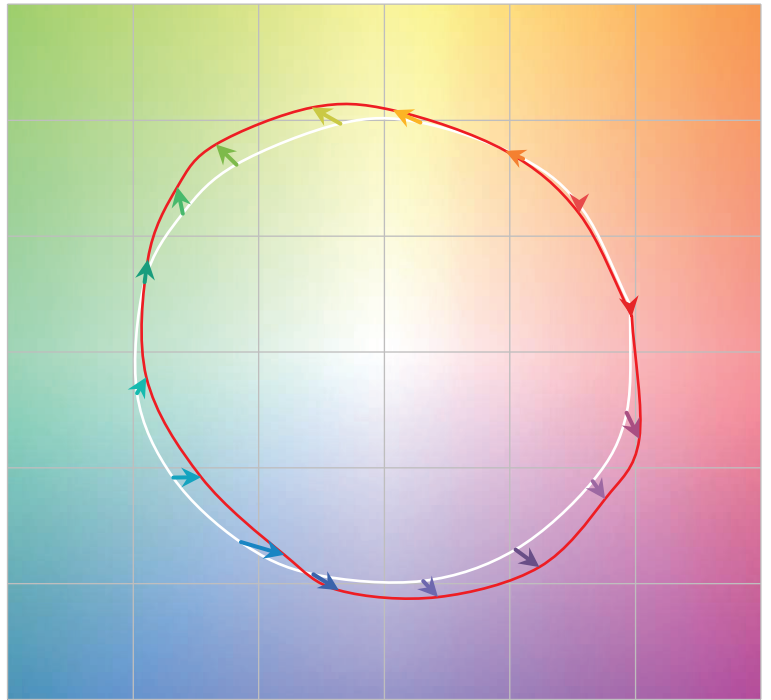
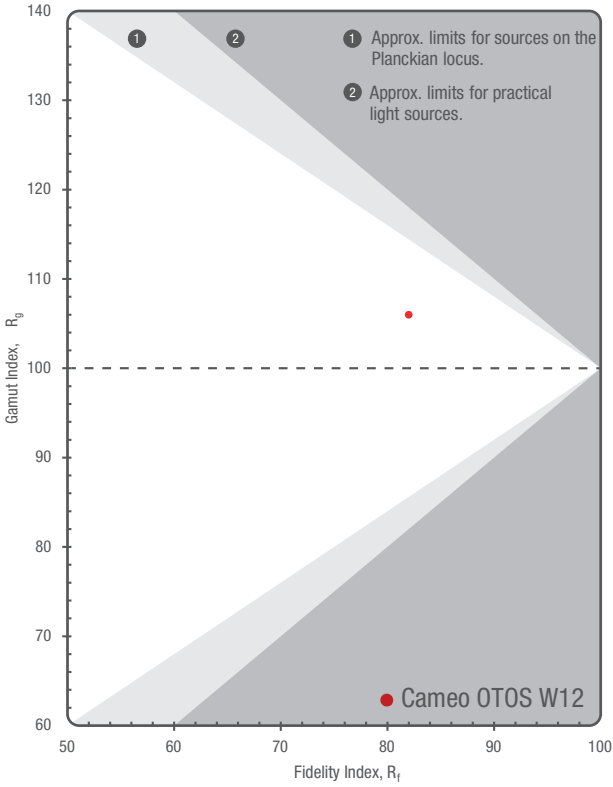
CCT = P3164 (+1.1)
TLCI-2012: 72 (P3164)



Sector	Lightness	Chroma	Hue
R	0	0	0
R/Y	0	0	--
Y	-	-	---
Y/G	-	--	0
G	-	--	0
G/C	+	-	++++
C	++	0	++
C/B	++	0	0
B	0	---	---
B/M	+	---	+++
M	+	--	+++
M/R	0	-	+++

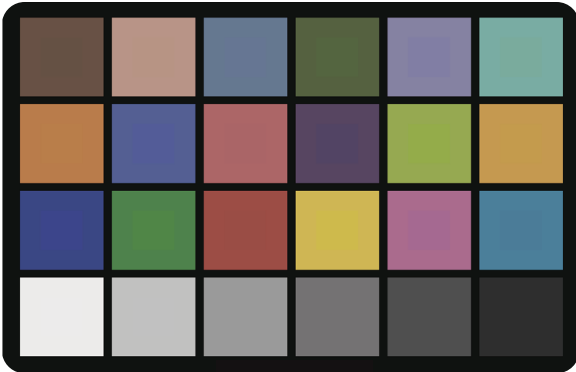


TM-30-15 R_f 82
R_g 106

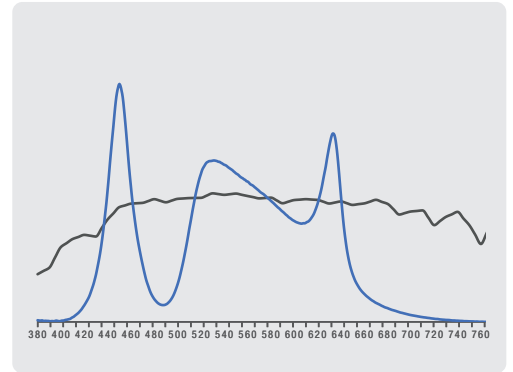


**5600K
Television Lighting
Consistency Index-2012**

CCT = D5219 (+0.5)
TLCI-2012: 72 (D5219)



Sector	Lightness	Chroma	Hue
R	+	0	+
R/Y	0	0	---
Y	-	--	---
Y/G	-	---	0
G	-	--	0
G/C	0	-	++++
C	+	0	+
C/B	++	0	-
B	0	---	---
B/M	+	---	++
M	+	--	+++
M/R	++	-	++++



TM-30-15 R_f 78
 R_g 101

